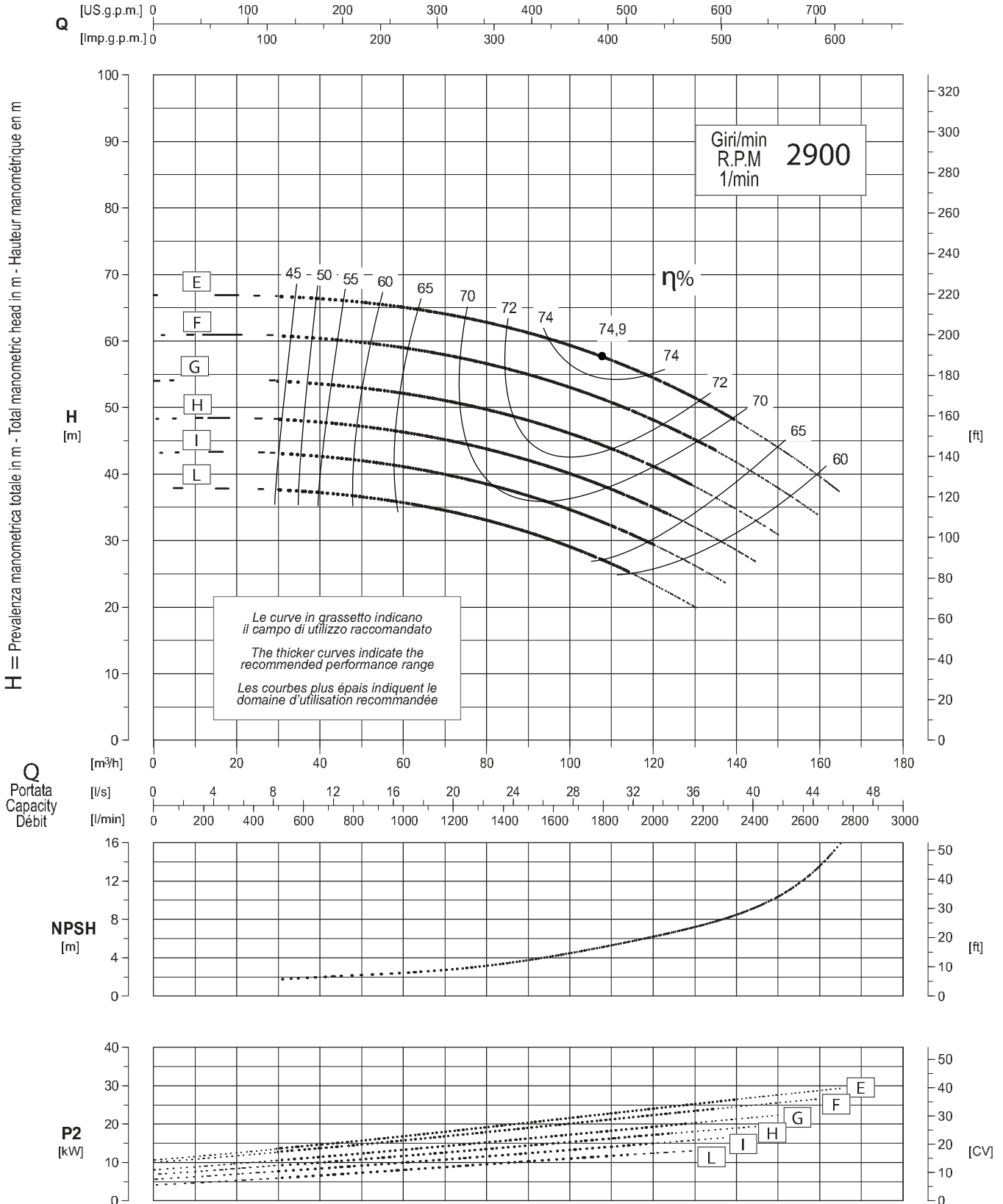




Chiudi documento

**Caratteristiche - Performances - Caractéristiques**

Pompa tipo **S1NR65-200** Aspir. X Mand. Inlet X Outlet **80 x 65**  
 Pump type **S1NR65-200** Aspir. X Refoul. Inlet X Outlet **80 x 65**



$\eta\%$  Rendimento della pompa  
 Pump efficiency  
 Rendement de la pompe

Tolleranze:  
 Tolerances: **9906 Annex A**  
 Tolérances:

Curve per liquidi aventi densità 1000 kg/m³ - viscosità 1 mm²/s alla temperatura di 20°C  
 Curves established for liquids density 1000 kg/m³ - viscosity 1 mm²/s - temperature 20°C  
 Courbes établies pour liquides densité 1000 kg/m³ - viscosité 1 mm²/s - température 20°C

Possibili aggiornamenti senza preavviso - Revision possible without prior notice - Mises à jour éventuelles sans préavis